



Varilift® Bucket Conveyor



Applications

- _ Free flowing products
- _ All manner of snack foods

Prevent product spills by using buckets that remain upright during and between discharges

Elevate, lower, or horizontally convey products to fit even the tightest installations. Choose from S, C, or horizontal configurations with buckets that can discharge at any point under the horizontal run. Optional multiple infeed and discharge points allow you to accept and to deliver product to multiple locations.

Clean conveying

Varilift's unique infeed system eliminates gaps between buckets, preventing product loss. Non-spill buckets remain upright after dumping, while an infeed leveler prevents product loss. Quick release one-piece polypropylene buckets simplify cleaning.

Auto-stop buckets

Buckets automatically stop if overloaded or jammed. Anti-roll-back feature prevents buckets from running backwards if the conveyor is turned off while buckets are loaded.

Modular construction

Composed of interchangeable modules, the Varilift can be added to or reconfigured to suit expansion or changes in the production line.

Quiet, reliable operation

Drive chains are silently guided by rails and an automatic chain tensioner minimizes wear by maintaining minimal tension.

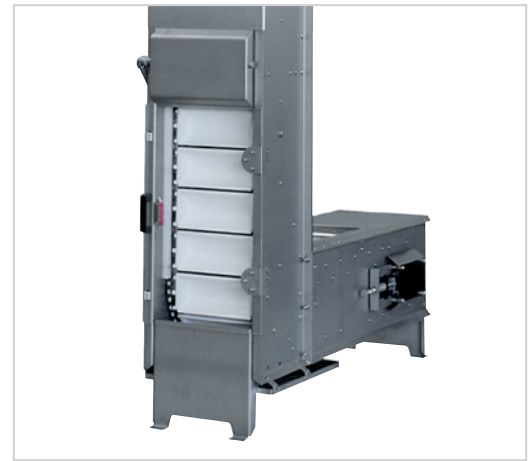
Choose from a variety of configurations to meet production capacity and plant layout needs.

Options

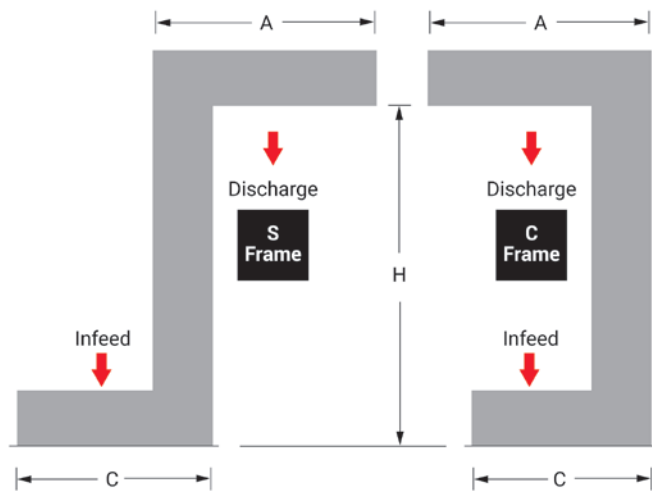
- _ Multiple infeed and discharge points
- _ Clean-in-place system
- _ Tip-to-clean buckets
- _ Stop-start anti-jam system
- _ Stainless steel construction
- _ Variable speed drive
- _ Polycarbonate covers
- _ Metal detectable buckets



Overlapping buckets prevent product loss during loading.



Tip-to-clean option aligns buckets in discharge position for easy floor-level cleaning.



Discharge product from any point under the horizontal section.

S-Series inches/mm	A: 54/1400	C: 54/1400	H: 39/1000
H-Series inches/mm	A: 86/2200	C: 98/2500	H: 55/1400

Starting from these minimum dimensions, you can increase the Varilift's size by 3.9"/100mm increments for a precise fit during installation.

Standard S-Series		
Bucket Width inches/mm	Bucket Volume 75% Full cu inches/liters	Production Rate 75% Full @ 90 BPM cu ft/cu meter per hour
7.8/200.0	76.0/1.2	288.5/8.2
11.7/300.0	111.0/1.8	424.8/12.0
15.6/400.0	147.0/2.4	561.2/15.9
19.5/500.0	182.0/3.0	697.5/19.7
23.4/600.0	218.0/3.6	834.1/23.6

High Capacity H-Series		
Bucket Width inches/mm	Bucket Volume 75% Full cu inches/liters	Production Rate 75% Full @ 70 BPM cu ft/cu meter per hour
11.7/300.0	390.0/6.4	946.3/26.8
15.6/400.0	518.0/8.5	1260.6/35.7
19.5/500.0	640.0/10.5	1557.2/44.1
23.4/600.0	768.0/12.6	1867.9/52.9

Volume and production rates are approximate.



heatandcontrol.com info@heatandcontrol.com